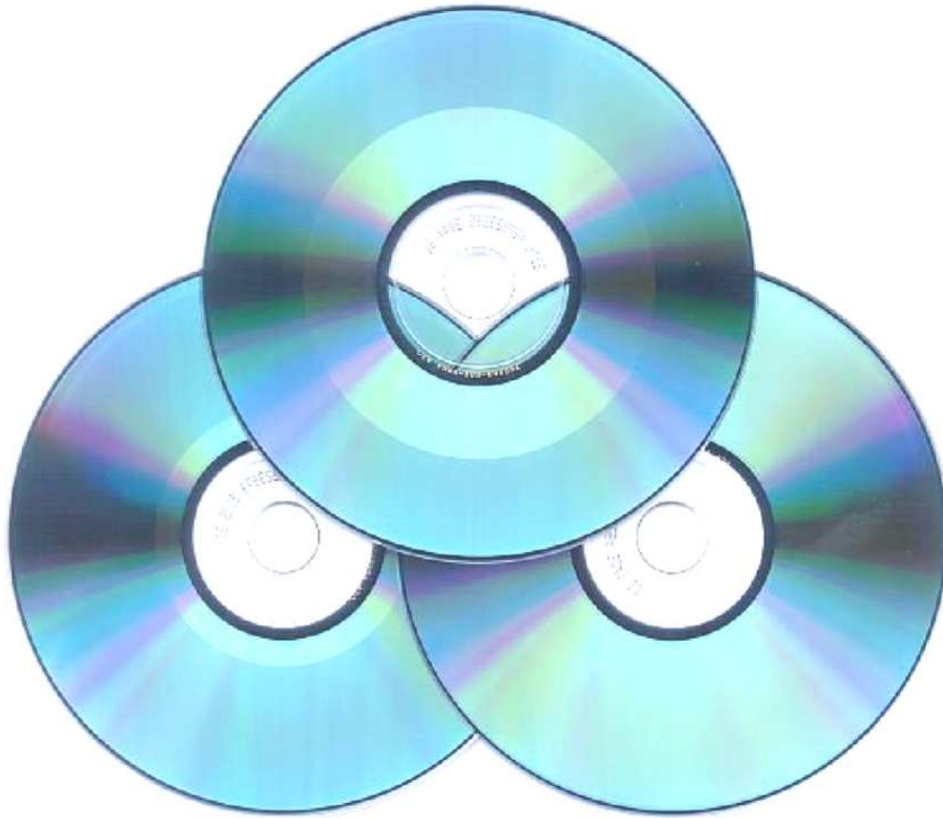


WELCOME TO GUI CDRWSEL



GUI for RSJ & DVDDAO

WELCOME TO GUI CDRWSEL

P1/ Prerequisites	P4
RSJ support	P4
DVDDAO support	P4
Other :	P4
P2/ CDRWSEL installation	P4
INSCDRW1	P4
P3/ CDRWSEL Start parameters	P5
1 / CDRWSEL customization/settings	P6
Setup	P7
Help	P7
Vpaths	P7
2 / INI parameters	P8
smart icon button	P8
icon size under "V1 Window"	P8
door open time	P8
(CDWFS) RSJ ini parameters	P9
DVDDAO ini parameters	P10
Mkisofs parameters	P11
CDRWSEL Intro / Welcome	P12
3 / Main Appl Window	P13
V1 Window / RSJ + DVDDAO	P13
RMB Popup options (on a selected device)	P14
Other Popup menu	P14
Save the 'log book' contain	P14
V1 Window / DvDDAO only	P14
Bar	P15
Window	P16
J Window	P16
4 / 'V1 Window' sub-functions	P17
Iso->CD or Trk->CD	P17
Wav->CD	P18
MP3->CD	P18
Trkcopy	P19
Trk->Iso	P20
Cdcopy	P20
Eject	P20
DVDDAO	P21
HD or CD/DVD	P21
DVD to DVD or HD	P22
5 / Finalize under RSJ	P23
6 / RSJ Special attach message	P24
7 / Integrated filemanager	P24
8 / PID's	P25
9 / Initial Run - step by step	P26
10 / Help	P27

WELCOME TO GUI CDRWSEL

11 / Tips	P28
Error at startup :	P28
RC20 during attach :	P28
Attach or View failed :	P28
DvD write errors with RSJ 5.xx :	P28
For any other problem :	P28
MP3 to CD:	P28
Hardware Manager	P29
12 / Change log	P30
* New V4.0.0 (alpha)	P30
A / Author comments :	P34

WELCOME TO GUI CDRWSEL

P1 / Prerequisites

Optimized for 1024 x 768 screen size

Lowest screen resolution : 800 x 600 (Main menu smart icon not enabled, mkisofs ini not ok yet)

Highest screen resolution : Not tested (May be ok. Send screenshots if problem)

RSJ support :

RSJ V3 or higher from (<http://www.rsj.de>)

DVDDAO support :

Cdrecord2 (V2.01 or up ported by Nickk)

Mkisofs2 (ported by Nickk) *USE version **mkisofs 2.01a32** until new release

Dvddao (1.0.0 or higher from Nickk - 1.1.2 or up recommended to get valid dvddao log file)
(<http://hobbes.nmsu.edu>)

Other :

REXXUTIL (standard OS/2 - eCS DLLs)

- I strongly recommend the use of **DANI's** drivers
- Danis506 tool package needed to enable all CDRWSEL functions

Trk2iso <http://hobbes.nmsu.edu> (for track to ISO option)

Cdrom.exe <http://hobbes.nmsu.edu> (used to enable cd-rom door close function)

Z.exe (Z!) <http://dink.org/z/download.htm> (for MP3 to CD option "output as *.wav")

rxu.dll rxu1a.zip package <http://hobbes.nmsu.edu> other kill process can be used :

- Kill.exe <http://hobbes.nmsu.edu> (used to reload RSJ daemon)
- PKill.exe from TOP210.ZIP (or higher) package on hobbes link.

RAMFS drive Can be used for temporary file "SET TMP=" under config.sys
(If you would like use it, download it from hobbes "RAMFS110" or higher)

Recommended screen resolution : 1024x768 (higher size may give incorrect output. Please send screenshots if you are in this case (only have a 1024x768 screen size display))

P2 / CDRWSEL installation

INSCDRW.cmd will install CDRWSEL. If dvddao, cdrtools and rxu1a zip package are under the same dir where inscdrw is. It will unzip these packages and put the RXU.DLL at the correct place. Do needed action according cdrtools and dvddao readme files and install processes (e.g. need of aspirout)

Latest inscdrw.cmd will create a small INI file for CDRWSEL to have a quick first run. Only do a refresh of the drive list and verify parameters set.

(It should be run from install directory)

After correct install of cdrtools and dvddao, process to next step.

To start CDRWSEL, click 2 times on its desktop icon.

(If it is a first install (no INI file exist), Customization/Settings window opens. Check the suggested drive list and click OK. Cdrwsel is ready to work)

WELCOME TO GUI CDRWSEL

P3 / CDRWSEL Start parameters

```
CDRWSEL -i -s -u -vol -cdani
```

- i** - No more needed. Always uses INI file now
- s or -q (-s)** - Activate Speed selection or (-q) use quiet mode
(-s) the parameter can be overwritten by INI file
- u or -t (-u)** - Use only Upper case characters into help viewer
(-t) enable task list option.
- vol** - Display the volume label in a "popup" (if available). Dropping focus will close the "popup" window.
- cdani** - Use old "Refresh" process
- l** - (L) Enable small debug mode (produces a cdrwsel.log file at close time)
- NVC** - Option to add if NORMAN Virus Control is installed and you enabled "Scan new or changed files" under On-access-scanner (NVC configuration) or CDRWSEL will not start (drrexx will open) like other rexx tools. This option adds a delay during INI file read.
- SDM** - Suppress CDWFS reload message at CDRWSEL initialization with load RSJ daemon selected.
- VBxx** - Enable verbose level for DVDDAO. xx can be from 2 to 10
- PB** - (working on - not usable)

Exemple:

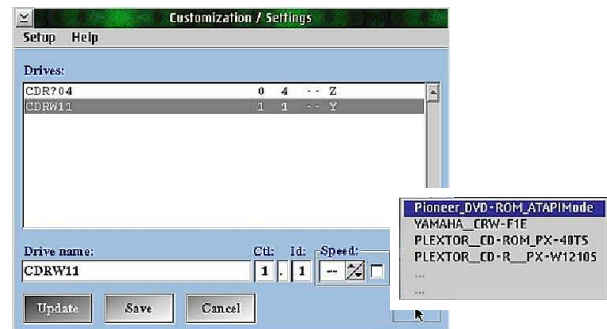
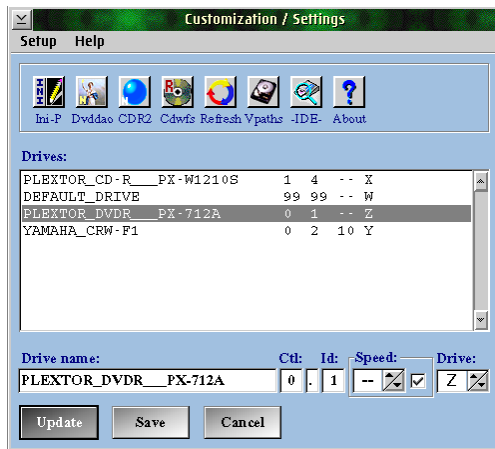
```
CDRWSEL -i -q -t -vol -sdm
! ! ! ! +--> Suppress CDWFS reload message if already up
! ! ! +-----> Show volume name of inserted CD if available
! ! +-----> Enable in "task list" option
! +-----> Use quiet mode
+-----> Use ini file
```

```
CDRWSEL /i /q /t (This syntax is correct too)
```

Note: When the program is first run and the cdrwsel.dat file doesn't exist, the New Drive List is run after answer to missing file message. Respond "save" to the first opened window before changing or updating drive list.

WELCOME TO GUI CDRWSEL

1 / CDRWSEL customization/settings



* Rejected drive list useful to substitute generic names

Drives

- All defined drives [LISTBOX]
- 1/ Click once to change DRIVE name (entry fields)
- 2/ Click twice to delete unwanted DRIVE from list (will be kept for Vpath)
- 3/ Manually enter a new drive into entry fields

Drive name

- A generic name for the drive to use

ctl*

- Adapter number (could be found under Hardware Manager)

id*

- Drive position (IDE) or SCSI ID

Speed

- Change current drive speed and new default for next use
- [x] click on check box to force use of speed parameter

update (Ok)*

- Update and put last in list the selected line with new values

Drive

- Assign a drive letter to a device (option enabled with "V1 Window" style)

(*) Note: - You'll be prompted to save the new drive list at CDRWSEL close.

- Value of CTL + ID is checked to determine if the input is a new entry or should overwrite the selected drive.
- Rejected drive list is available when a scare appears on the right bottom (RMB)



Open dialog folder to set general CDRWSEL start parameters and design (define INI file)



Open dialog folder to set dvddao general DVDDAO (Nickk) parameters and link to mkisofs



Open Input field to specify CDRECORD2 (Nickk) path name



Open dialog folder to set general RSJ parameters (CD Writer Control)



Rescan system for available auto detect burner (OS/2 or RSJ or Scanbus used)



Open Vpath dialog to add/remove source/destination drives/paths into main Menu 1



Display HW configuration using Daniela tool (Danis506 package)



Product version.Release.Modification level as well as author information

WELCOME TO GUI CDRWSEL

Setup

- Access to

- Define ini parameters : Open dialog folder to set general CDRWSEL start parameters and design (define INI file)
- Recorder : Open dialog folder to set general RSJ parameters (CDWFS - CD Writer Control). Check "Run RSJ Daemon" to have this option enable
- DvDDAO : Open dialog folder to set dvddao general DVDDAO parameters and link to mkisofs
- CDRecord : Open Input field to specify CDRECORD2 path name
- View (ini) : View contain of generated cdrwsel ini file
- Cdrum OP/CL : Allow use of open/close command (external program needed)
- Task list : add/remove cdrwsel from Task list (add parameter '-t' to enable function)
- Killer : select a thread killer tool available under CDRWSEL directory
- Run RSJ Daemon : Start RSJ daemon if it wasn't under config.sys
- Single burner : To use if only 1 burner exist and **attach didn't work**
- Drive list 1) Refresh : Delete and generate a new drive list (add drive name found)
2) Deep refresh* : Uses RSJ tool to check each physical adapter position
- Vpaths* : add/remove device/hd path into main windows (max=6)
- Tool bar : enable/disable tool bar visibility

Help

- Access to

- How to : Read file cdrwsel.doc
- ? : My tool version.release.modification

(*) Note : 'deep scan' = Auto detection of eligible CDRW/RSJ (unresolved names are replaced with generic names)

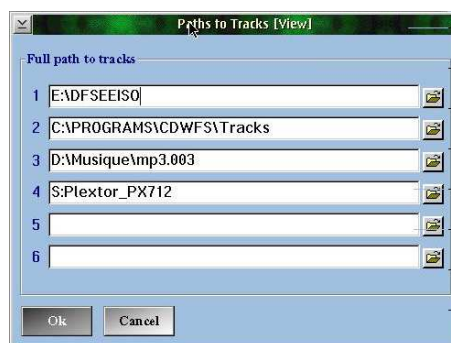
1/ CDRWxy (Drive is ready ctl=x, id=y)

2/ CDR?xy (Drive not ready flag received e.g. no CD in the burner)

3/ CDR*xy (Drive in use. Z: is already in use)

'Vpaths' see following description

Vpaths

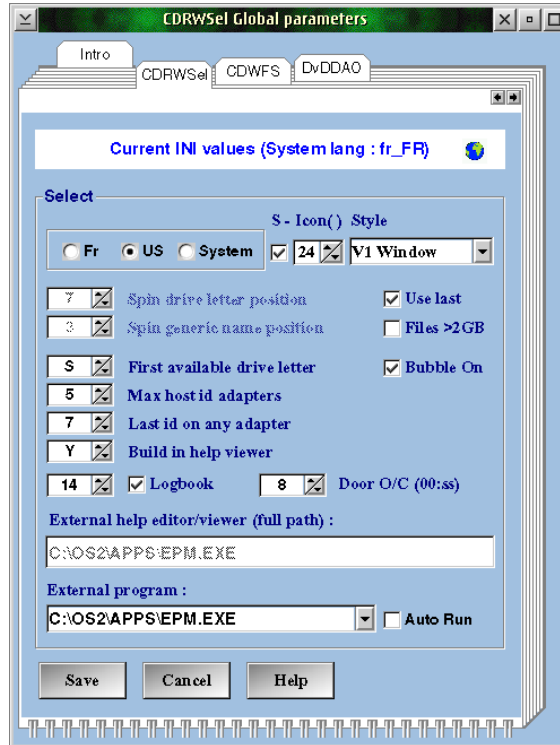


- To specify an audio CD in a CD-ROM, ignore the first "\" and the text following "drive_letter:" is used as comment and drive is supposed CD-ROM. e.g. (4) S:Plextor_PX712
- ? into input field opens a popup menu with the list of removed drives from "refresh list"
- Blanks in path name are not supported (program will change them into "_").
- If a path doesn't exist, it is created (multi level creation supported) than one level)
- **RECORDER** (reserved uppercase value) in input field can be usefull to have [CDVIEW CDR:] for CD creation from iso files.

WELCOME TO GUI CDRWSEL

2 / INI parameters

- **CDRWSEL ini parameters** (Select [Settings] + [Icon] or [Setup] + [Define ini parameters])

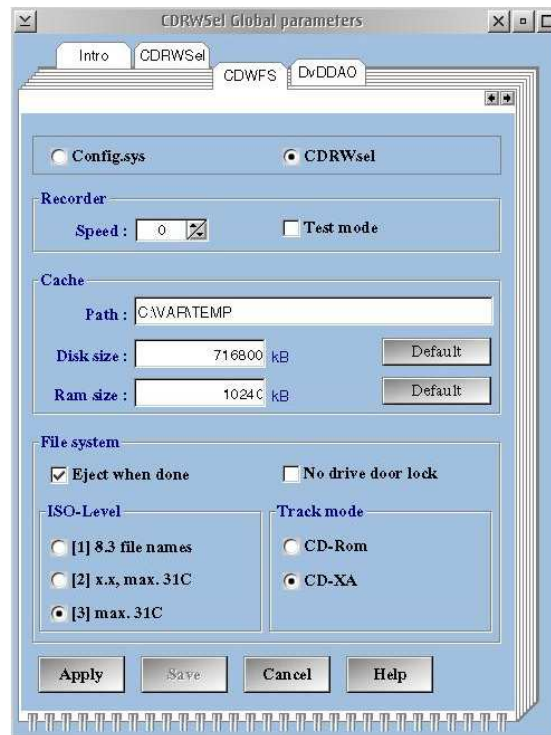


<u>Language</u>	: Select your language FR / US / SYSTEM (set_lang= from config.sys)
<u>Style</u>	: Select your app style window from the drop down list
<u>Spin drive letter position</u>	: Select the default drive letter to use for cdattach (1 for Z, 2 for Y, 3 for X...)
<u>Spin generic name position*</u>	: Select the Drive name mostly used (= line number into the list)
<u>USE last *</u>	: Click on this option to use closing values instead of previous defined values
<u>First available drive letter</u>	: Define lowest drive letter available for Attach (from Z to the letter you assign)
<u>Max Host id adapters</u>	: Specify highest available ctlid (example for 0 and 1 follow) <ul style="list-style-type: none"> ➤ 0 - for the first IDE controller ➤ 1 - for the second IDE controller ➤ Value may go above 3 if DANI's IDE to SCSI mapping is used
<u>Last id on any adapter</u>	: Specify highest IDE / SCSI id available for auto-detection (will save time at auto-detection time (1 is good for IDE))
<u>Build-in help viewer</u>	: Specify "Y" to use internal viewer, "N" for any user preference
<u>External help editor/viewer</u>	: only with previous option = "N" (specify full path to use e.g. c:\apps\epm.exe)
<u>External program</u>	: Drop the list down and click on -new- to add a new entry (to del, select an entry)
<u>Auto Run</u>	: Start the selected program at CDRWSEL startup
<u>S</u>	: Select 'S' to enable "V1 Window" smart icon button
<u>Icon()</u>	: Select drive device icon size under "V1 Window"
<u>Files >2GB</u>	: Enable support of single file size > 2GB (use of Jan Erick DLL)
<u>Bubble on</u>	: Enable Bubble help on dialogs
<u>logbook</u>	: Open logbook under or above main "V1 Window"
<u>Door O/C (00:ss)</u>	: Adjust drive door open time after "open door" was requested under dialog

(*) Note : Click on save to update or save CDRWSEL ini file.

WELCOME TO GUI CDRWSEL

- **(CDWFS) RSJ ini parameters** (Select [Settings] + [Icon] or [Setup] + [recorder])

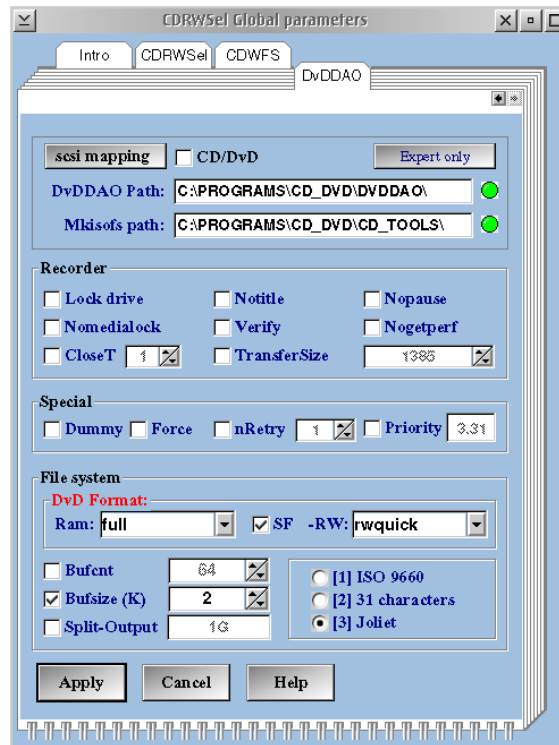


RSJ version	: Version is displayed in the dialog title bar
config.sys	: Select this option if you want to change CDWFSD defaults in config.sys. Changes take effect at next reboot
CDRWSEL	: Select this option to load/change CDWFSD parameters for all new attach processes - Drives must be detached before using dynamic CDWFSD replacement

Note : Other options are same as under RSJ CD Writer control

WELCOME TO GUI CDRWSEL

- **DVDDAO ini parameters** (Select [Settings] + [Icon] or [Setup] + [dvddao])



scsi mapping : Display result of cdrecord2 "scanbus"
 CD/DVD : Display only CD/DVD drives from scanbus
 DvDDAO Path : Path name to dvddao program (green LED = ok)
 Mkisofs path : Path name to mkisofs2 (green LED = ok)
 Expert only : Mkisofs2 parameters (enabled if corresponding LED = green)

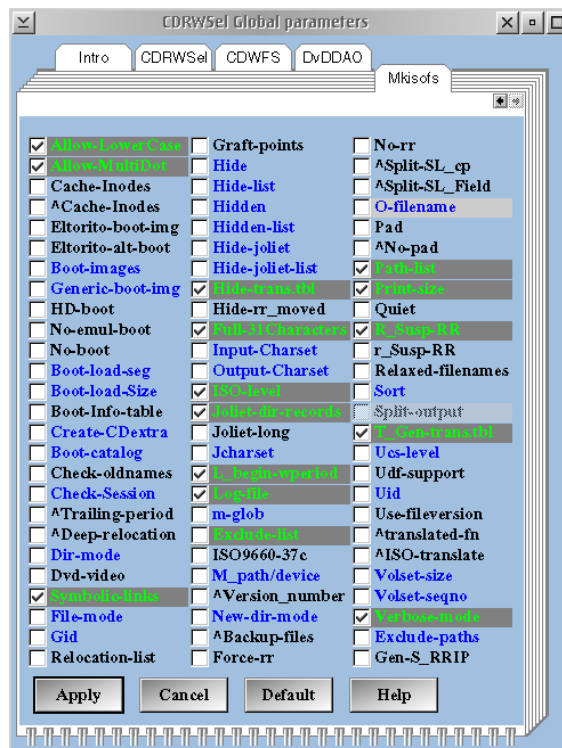
Suggested to set [Verify] to use MD5 verification process .

Groupbox Recoder, Special, File system and last options are explained under DVDDAO help*.

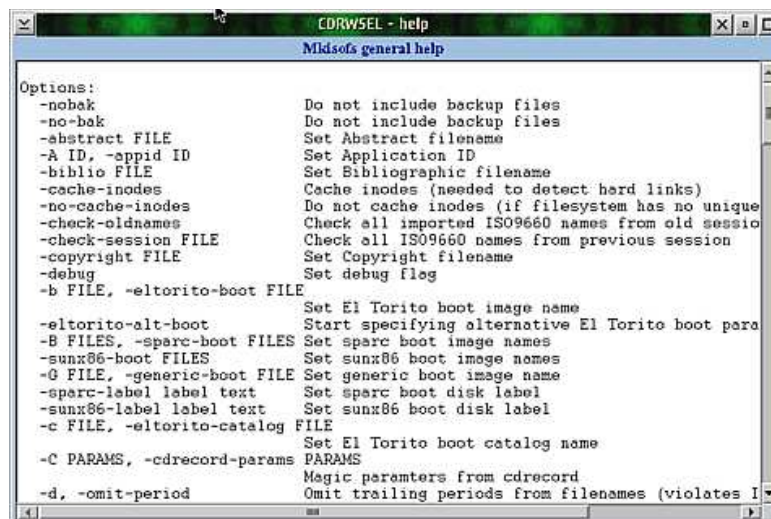
(*) Note : Use dialog help button to get dvddao online help information.

WELCOME TO GUI CDRWSEL

- **Mkisofs parameters** (Select [Settings] + [Icon] or [Setup] + [dvddao] + [expert only])



Click on help to get mkisofs2 help information. If you are not an expert using mkisofs, don't change existing parameters. Parameters which can be specified through an optional file aren't listed under this dialog. Current setting should be ok for most utilization. Mkisofs2 help view follow :



WELCOME TO GUI CDRWSEL

- **CDRWSel Intro / Welcome**



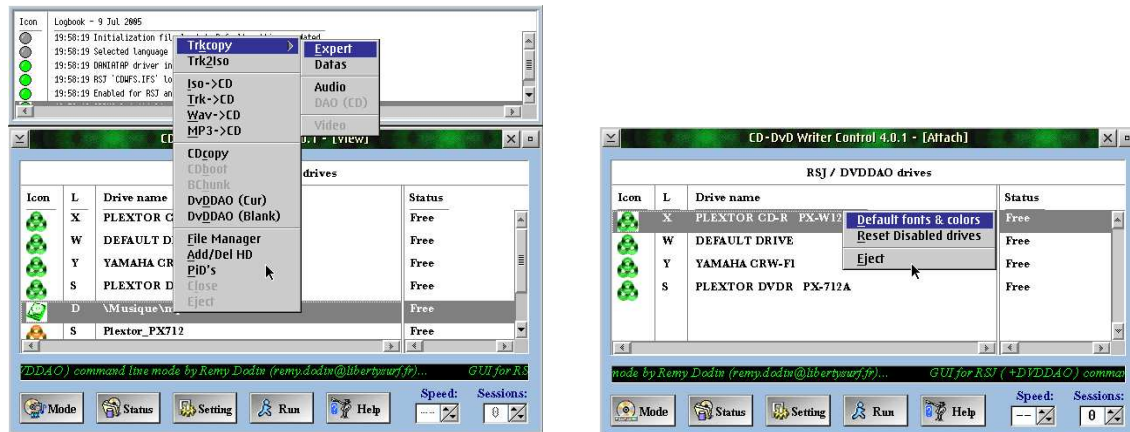
Under the welcome panel, you can find what I wrote this GUI and a few great thanks to those helping me make it work better and with more new functions. The button [Write to the author] works with mozilla mail. It opens a mail with required information and comment line for feedbacks and requirements. As long the version is in alpha or beta phase, bugs may exist and I'll work on it to find corrections as quick as possible.

WELCOME TO GUI CDRWSEL

3 / Main Appl Window

Appl Window *style* is selected through "*define ini parameters*" window

- **V1 Window / RSJ + DVDDAO** (DVDDAO is available under VIEW mode + RMB)



Main RSJ (**view mode**) or/and DVDDAO

Main RSJ (**attach mode**)

With above logbook * dialog (auto position)

List-Title	: Title specifying current supported programs and drives	[CONTAINER]	
enabled	Function are enabled according which program is installed. With mode button		
	: [Attach] Enter or click twice on a drive [Free -> Attach], [Attach to finalize/free]		
	[View] Enter or click twice and open [CD_view], [restore CD_view]		
	With mode button disabled (dvddao only). Enter or click twice [Open DVDDAO]		
	<u>Icons Color:</u>		
	Green =Free	Yellow =Running	Red =Attached
	Black =Error	Orange =Free CD-ROM	Blue =CDView/DvDDAO
mode *	: Change from "Attach" to "View" or reverse	[PUSHBUTTON]	
	* Enter on an entry start attach or view (dvddao if no RSJ)		
Sessions	: Select the number of existing sessions to skip (<16)	[SPINBUTTON]	
Settings	: Access to defined drive list dialog	[PUSHBUTTON]	
Status	: Gives the result of chkdsk /v of [?:\]	[PUSHBUTTON]	
	(available space on cd - number of sessions...)		
Run	: Run personal program	[PUSHBUTTON]	
Help	: Direct Help access	[PUSHBUTTON]	
RMB	: Popup options (will change when on path, CDROM or attached CDRW)		
	See following description		

(*) Note : - Button disabled if RSJ not installed

- To open the 'logbook' dialog, active the function under cdrwsel init parameters. Dialog position may change according space left on the bottom of the main dialog (above or under)

WELCOME TO GUI CDRWSEL

- RMB Popup options (on a selected device)

trkcopy	: Trackcopy function (data, audio, video)
Expert	: Allow multiple possibilities allowed under RSJ
Data	: Work with Datas only
Audio(DAO)	: Work with audio files only wav
Video	: Work with video files (video block size used)
trk2iso	: Converts each *.trk file into *.iso file
Iso->CD	: Create a CD from an iso image file
Trk->CD	: Create a CD from a track image file
Wav->CD	: Create an audio-CD from wave file
MP3->CD	: Create an audio-CD from MP3 files
Cdcopy	: Use RSJ Cdcopy functions
Cdboot	: Calls cdboot (PM) for the drives "Attached state"
DvDDAO *	: (Cur) Open DVDDAO using current selection as input
	: (New) Open DVDDAO with a new blank work project
File Manager *	: Open integrated small filemanager (available on paths only)
Add/Del HD *	: Open 'Vpath' to add HD path into container list
Pid's *	: View and manage background cdrwsel started processes or System PID's (kill)
Close	: Close drive door (if cdrom.exe is installed)
Eject *	: CD-ROM/DVD-ROM or free CD-RW/DVD-RW drives

- Other Popup menu

Default fonts & colors	: Reset general fonts and colors to original values
Reset Disabled drives	: Reset disabled drives done under specific process (use when needed)
Eject	: CD-ROM/DVD-ROM or free CD-RW/DVD-RW drives

- Save the 'log book' contain

Save log	: Save the current logbook into a file under temp directory
----------	---

- V1 Window / DvDDAO only** (see previous description)



- (*) Note : - Options supported when only DvDDAO is enabled
 - This "window" supports Color and Font drag and drop (a few limitations only)

WELCOME TO GUI CDRWSEL

- Bar



X	: Exit program	
[PUSHBUTTON]		
S	: Call customization and <u>S</u> ettings	[PUSHBUTTON]
i	: <u>I</u> nformation / Status	[PUSHBUTTON]
A	: CD_ <u>A</u> ttach	[PUSHBUTTON]
V	: CD_ <u>V</u> iew	[PUSHBUTTON]
F	: Direct access to <u>F</u> inalize options	[PUSHBUTTON]
R	: <u>R</u> un personnal program	[PUSHBUTTON]
H	: Direct <u>H</u> elp access	[PUSHBUTTON]

Note : - A and V background buttons have same colors as under "V1 Window"

WELCOME TO GUI CDRWSEL

- Window



CD:	: this field is empty at first run time	[SPINBUTTON]
Drive:	: Drive letter to be used with the attached CDRW	[SPINBUTTON]
Sessions:	: Select the number of existing sessions to skip	[SPINBUTTON]
Attach	: Perform cdattach using previous parameters	[PUSHBUTTON]
View	: Start CDView using CDR/W parameters	[PUSHBUTTON]
Finalize	: Direct access to finalize options	[PUSHBUTTON]
Status	: Information on CD	[PUSHBUTTON]
Settings	: Access to define drive list dialog	[PUSHBUTTON]
Run	: Run personnal program	[PUSHBUTTON]
Help	: Direct help access	[PUSHBUTTON]
RMB	: on background dialog available (see J Window description)	

- J Window



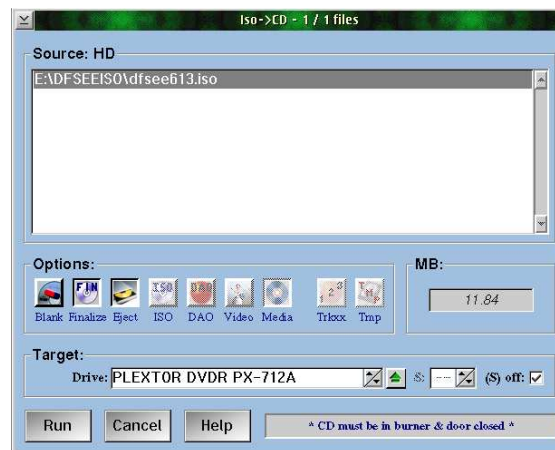
CD:	: this field is empty at first run time	[SPINBUTTON]
Drive:	: Drive letter to be used with the attached CDRW	[SPINBUTTON]
Sessions:	: Select the number of existing sessions to skip	[SPINBUTTON]
Attach	: Perform cdattach using previous parameters	[PUSHBUTTON]
View	: Start CDView using CDR/W parameters	[PUSHBUTTON]
Finalize	: Direct access to finalize options	[PUSHBUTTON]
Status	: Information on CD	[PUSHBUTTON]
Settings	: Define drive list dialog	[PUSHBUTTON]
Run	: Run personnal program	[PUSHBUTTON]
Help	: Direct help access	[PUSHBUTTON]
Speed	: Change current speed stting only	[PUSHBUTTON]

Note : - (RMB) on any background window style opens a popup menu. You can reset fonts and colors, reset the in-use drive list if "attach" remains disabled for a drive letter. Use new DVDDAO GUI
 - Enter (2 click) on a drive will open "V1 Window" limited sub-functions popup menu

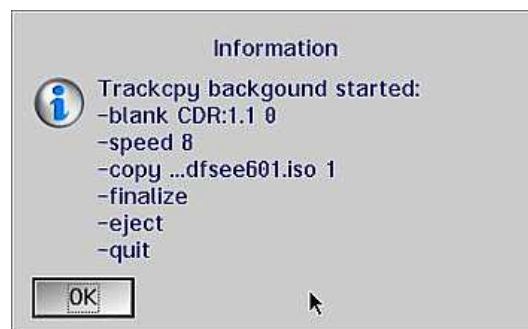
WELCOME TO GUI CDRWSEL

4 / 'V1 Window' sub-functions

- **Iso->CD or Trk->CD**
 - a. Use "V1 Window" style
 - b. Add full path name where all *.iso (trk) files are under Vpaths (do it one time only)
 - c. Under "V1 window", change mode to CD_view
 - d. RMB on the HD path name where *.iso (trk) files are
 - e. Select Iso->CD (Trk->CD) from the popup window



- Select the source *.iso (trk) file (Source: HD - One selectable file only)
- Select the destination drive (Target:)
- Select "Blank" for CD-RW if needed
- Select "Eject" at end of process
- Select if speed has to be changed or not
- Select the correct speed to use (**size auto updated according selection**)
- Be sure to have a CD in the burner and drive door is closed

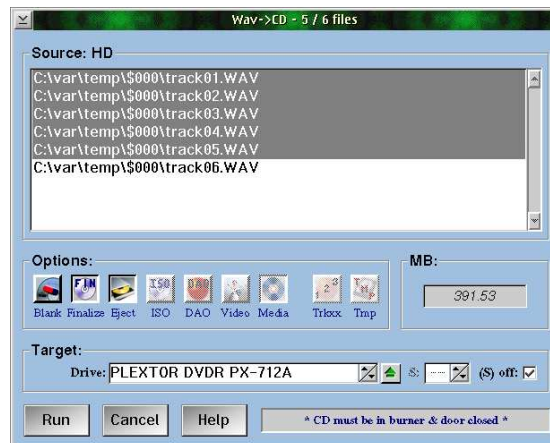


Type of message issued after you press the "Run" button. You'll find all step which are going to be processed according your request. As you can see, the process runs in background as "detach" mode (RSJ progress bar isn't available yet. Door opens at end of process with "Eject" option). The total process time to finish is file size and speed dependant. The corresponding Pid can be found / killed under CDRWSEL " Pid's " window

WELCOME TO GUI CDRWSEL

- **Wav->CD**

- Use "V1 Window" style
- Add full path name where all *.wav files are under Vpaths (do it one time only)
- Under "V1 window", change mode to CD_view
- RMB on the HD path name where *.wav files are
- Select Wav->CD from the popup window



- Options and target selection is similar to *.iso process except "multi-selection"

- **MP3->CD**

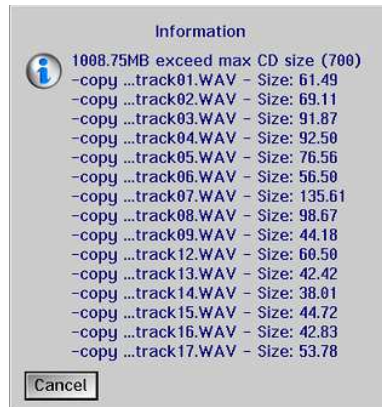
- Use "V1 Window" style
- Add full path name where all *.mp3 files are under Vpaths (do it one time only)
- Under "V1 window", change mode to CD_view
- RMB on the HD path name where *.mp3 files are
- Select MP3->CD from the popup window (z.exe needed)



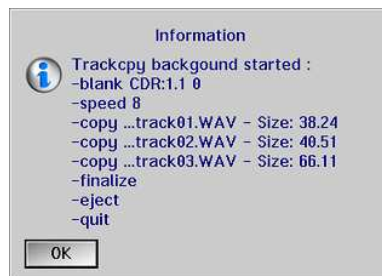
- Options and target selection is similar to *.iso process except "multi-selection"

WELCOME TO GUI CDRWSEL

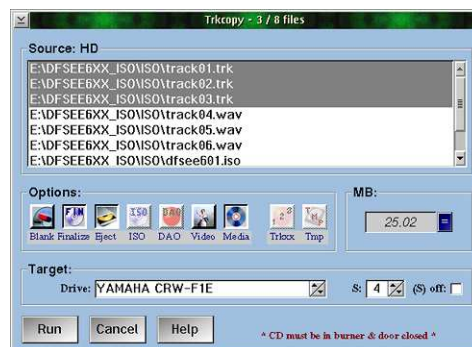
- Process uses two stage
 1. MP3 to wave (message field is updated during MP3 to wave process)
 2. wav to audio CD (message appears if maximum CD size is exceeded)
 - a. If size exceed 650MB, you can continue if media allows 700MB
 - b. If size exceed 700MB, process will be aborted .



Normal process gives you an information message only and audio CD is created.



- **Trkcopy**
 - a. Use "V1 Window" style in CD_view mode
 - b. Select the drive / path to work with (from CD and from HD screenshots follow)
 - c. RMB on the delected input
 - d. Select Trkcopy + (expert or datas or audio or DAO or video)



- Options and target selection are similar other process with "multi-selection"

WELCOME TO GUI CDRWSEL

- DAO will select all files and is available for audio CD source only
- Media wil allow you to change destination from HD to CD or reverse.

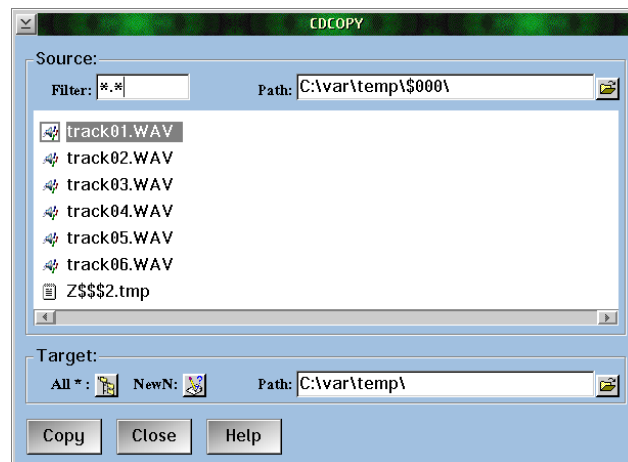
- ☒ Expert - Most options are validated and wrong selection can give bad result *Warning*
- ☒ Datas - Only options for data tracks processing is enabled
- ☒ Audio - Only options for audio tracks processing is enabled
- ☒ DAO - Only audio CD to audio CD is enabled (full copy with disc at once)
- ☒ Video - Set on/off sector size of 2336 bytes (instead of 2048 bytes)

- **Trk->Iso**

This option allow you to copy tracks to a HD path destination and process them to get ISO image files (trk2iso is needed).

- **Cdcopy**

- a. Use "V1 Window" style in CD_view mode
- b. Select the path to work with.
- c. RMB on the selected input
- d. Select Cdcopy



- You can change the initial source path
- You can add a filter to have specific files only (wildcard * can be used)
- 'blank' character isn't supported in path or file name
- Specify target path (an attached CD seen as HD can be used)
- Select 'All *' to Cdcopy all files from current and sub directories
- Select 'NewN' to Cdcopy a file under a different name
- For more information, review Cdcopy under RSJ documentation

- **Eject**

May be used on CD/DVD-ROM or not attached CD/DVD burner.

WELCOME TO GUI CDRWSEL

- **DVDDAO** (cur = new project updated with current selection - blank opens an empty project)

Under RSJ, main windows entries are target media but under dvddao, there are source media used to update a new working project which will be burned on a different device. 2 dvddao windows design are available according the source device selected. **Only MARKED items are burned** (select > use of RMB)

- HD or CD/DVD menu opened from defined path name (or "new" option)



Remarks :
Empty folders are not marked by default.
Enter on a folder will open filemanager dialog



Erase selected files from the current project (also available under RMB)



Switch from data project to DVD video project (**VIDEO_TS + AUDIO_TS**) **never mark them**



Access to some logs and user options (1*)

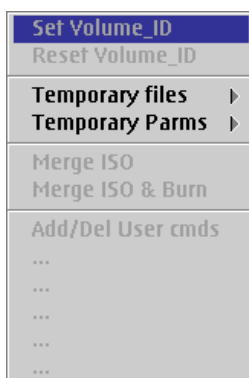


Import / Export created project (import append allowed) (2*)

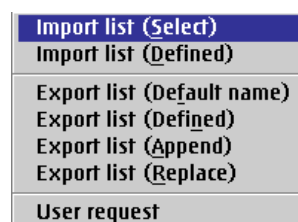


Open internal filemanager to add files or folders into the opened project (files drag/drop ok)
- To add a folder, RMB + return folder

(1*) available options (popup menu) :



(2*) Available options (popup menu) :




Defined (you'll have to specify a file name)
Default (system generates a default name)
Other options open internal filemanager for search/select

- You may specify a volume label
- "Temporary" give access to some generated temp files

WELCOME TO GUI CDRWSEL

- DVD to DVD or HD (create ISO) menu opened from defined DVD entry [dvddao (cur)]



If source DVD has no media loaded, a message is issued and door opened for a few seconds to allow media load. Source is the selected DVD from main CDRWSEL menu and target can be a DVD burner or HD to create a DVD ISO file. Click on  to open / load media (door will close after o/c-time elapsed (ini parameter))



Only RW media may accept this option (enabled when usable, default is ok) *



Close/Finalize media (use it as is. DVDDAO will finalize media after write) *



Eject the media after write opération *



Use mkisofs to generate needed image file used by DVDDAO (default is ok)



Format the media (apply to RW/RAM media with some restriction. Default is ok) *



Enable mkisofs video block size option for video DVD



Select output target. It may be a DVD or a HD path



Create incremental files



Use HD support for output/input mkisof/dvddao instead of pipe function

A few field descriptions :

Used Total size of current media (DVD) + marked items from the current project (auto updated)

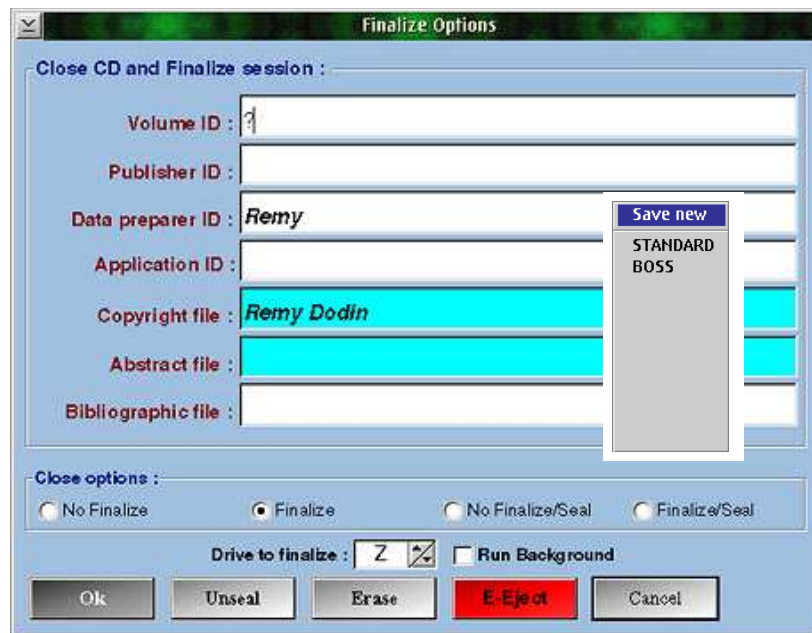
Left Total size available on the media after adding marked items from the current project

Right bottom field is a message area. Some nice information are displayed in it like loaded DVD media type, DVD size and max supported speed and more. RMB in the field shows you DVDDAO version and DVD media manufacturer id.

(*) Note: usable as single command under data mode + no item in the project + mkisofs OFF (default)

WELCOME TO GUI CDRWSEL

5 / Finalize under RSJ (Select [Finalize] or [F]. Under V1 window, click on [attached] drive)



Click on Finalize button under app Windows followed by :

- a. No finalize = Close CD only
- b. Finalize = Close CD and finalize
- c. No Finalize/Seal = Close & Seal CD
- d. Finalize/Seal = Close and finalize & seal CD
- e. Emergency eject = Flush buffers and eject the CD
- f. Add complementary comments (only validated with b/ and c/). e.g. Copyright, Author ...
- g. Unseal (remove seal protection if CD was written by RSJ)
- h. Erase RW media only
- i. Verify "Drive to finalize"
- j. Check "Run Background" to allow finalize as detach process (usefull if more than one finalize has to be done)

Note : RMB click on background of "Close CD and finalize sessions :" part opens a popup window. You can save or restore general updates from entry fields (see the cursor position on the picture). A "?" in the "Volume :" entry field does the same.

- * After selecting save, give a title to your new profile (uses to update the popup window list)
 - e.g. - DEFAULT (for general comments)
 - CDRWSEL (for my backup of CDRWSEL)
- * The list allows 10 entries.

WELCOME TO GUI CDRWSEL

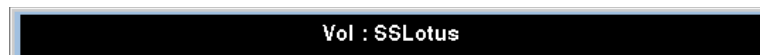
6 / RSJ Special attach message (Appears if attached CD/DvD isn't blank)

Attaching a non-blank CD results in displaying the number of sessions, whether CD is data or audio and total used on CD.



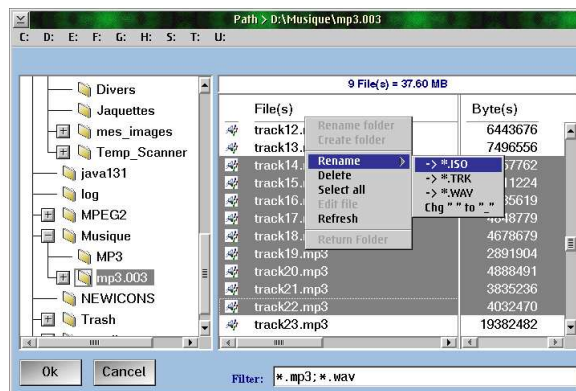
Choose one of the options. select "continue" to work with this attached CD.

If parameter "-vol" was specified starting CDRWSEL and a volume name exist, following popup message is displayed :



7 / Integrated filemanager

The new filemanager is fast and has a few nice options usefull for CDRWSEL



Left side is a tree view. Enter on a folder display corresponding files and sizes under right view. Total size of selected files is given at the top of the container. Bottom field allow you to specify filters.

- Enter on a file allow you to rename it
- RMB on file container allow several options like global extension rename, remove blanks in name, delete selected files.
- Drag/drop files into project is supported or you can use ok button. When a folder is expected to be returned into the calling dialog, click on ok to give back the folder value. e.g. filemanager called from Vpaths .
- RMB under tree view, allow folder rename, create folder and return folder into dvddao project
- Filter: you can filter displayed files using one or more filters separated by a ";". e.g. *.mp3;*.wav

Note : Popup is closed losing focus.

WELCOME TO GUI CDRWSEL

8 / PID's

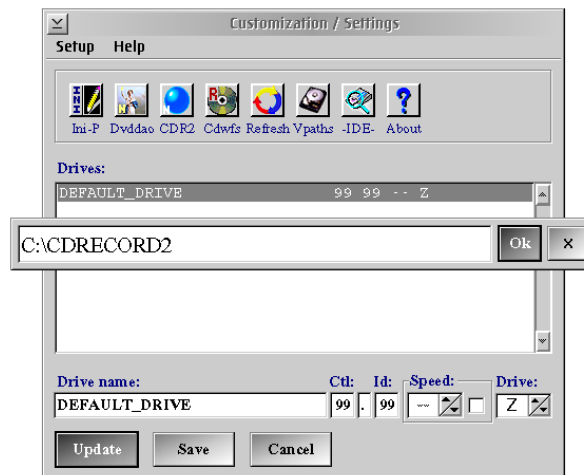


- My current PID's
Show PID's started by CDRWSEL. Click 2 times on a PID to access kill feature (prefer rxu.dll)
- All system PID's
Show all running PID's under the system. Click 2 times on a PID to access kill feature (prefer rxu.dll)
- RMB into the list allow you to change the view from detail to bitmap .

WELCOME TO GUI CDRWSEL

9 / Initial Run - step by step

- a. RSJ and/or DVDDAO are installed
- b. Unzip cdrwsel zip package into a temporary path
- c. Run inscdrw.cmd to installed cdrwsel, following eCS rules
- d. Click on cdrwsel icon to start it
- e. Settings window now appears :



With DVDDAO only, enter CDRECORD2 path into the input field. This is required to update your drive list. If you have specified DVDDAO only, RSJ verification is then disabled

If CDRTOOLS, DVDDAO and RXU zip package were installed with inscdrw, a temp input file was created for cdrwsel to tell him where cdrecord2 is and the correct path is then suggested

With RSJ or (RSJ and DVDDAO), only Customization/settings dialog is open and the list is auto-updated using RSJ tools. At end of drive list update, click on save else click on **"Refresh"**.

According to your daniatapi.flt configuration, it may switch to "Deep refresh" and update the not_burner_list if name resolution fails (generic name are used). If ctl.id in the "refresh" list (information from rmview) aren't correct, run "deep refresh" (change names from the bottom line if needed).

- f. Restart CDRWSsel (auto)
- g. From the main window, you can select settings to change the drive list (don't forget to save the list after you change it). You can select **Setup** and :
 - 1) Initialize to change window style (bar - window - V1 window - J window).
 - 2) RSJ option : Click on Run RSJ Daemon if CDWFSD is commented in your config.sys file. This will enable Recorder option too. Without CDRWSel parameter -SDM, a message will suggest you to reload CDWFSD at CDRWSel initialization if the daemon was previously loaded.
 - 3) Once Recorder is enabled, you can change CDWFSD settings
 - 4) Add or Update Vpaths list with CDROM drives and or HD path (tracks, mp3, wav, ISO, other...)

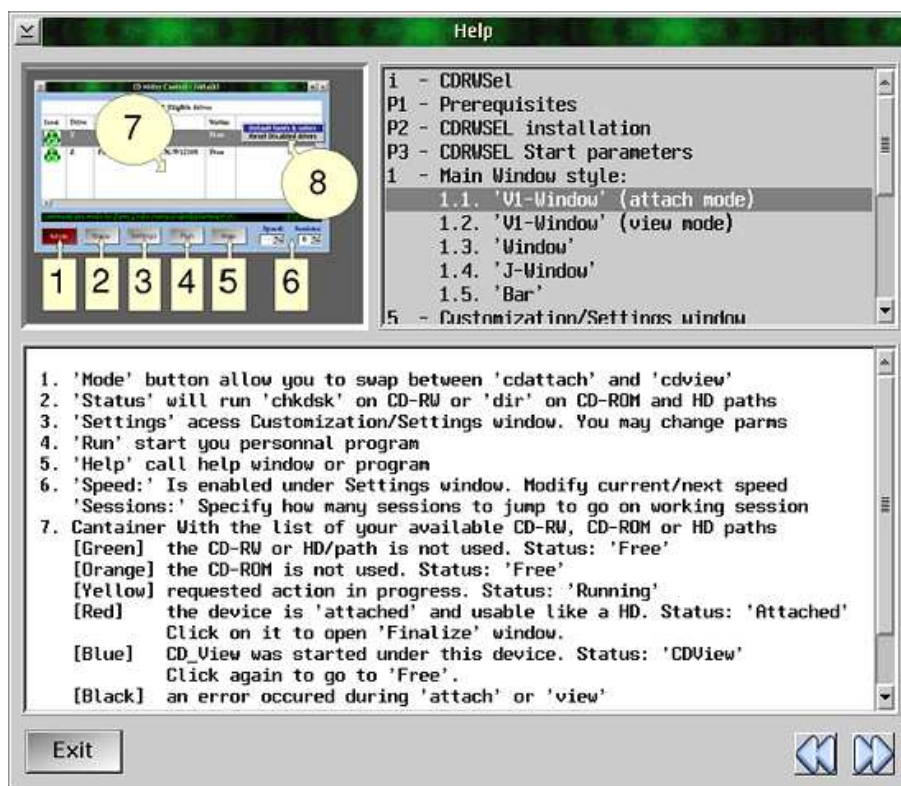
WELCOME TO GUI CDRWSEL

10 / Help

A new help program is added with CDRWSEL package. This program is easy to use and can be used by every body to create quick help without compilation. CDRWSEL calls the help program with a positional parameter to point into the right part.

➤ cdrwhlp.exe parm01 parm02

- parm01 is the pointer to the corresponding line number into the TOC.
- parm02 is the input text file with a htx extension (default = cdrwhlp.htx)
- The corresponding dll is named cdrwhlp.dll (fixed name but you can create yours)



WELCOME TO GUI CDRWSEL

11 / Tips

Starting CDRWSEL without RSJ installed: add "SET

Error at startup :

If CDRWSEL will not start, check the rexxlib used (standard or OBJREXX) try the switchrx command (eCS1.x)

If NVC is used try to use the -NVC parameter (PB: drrex opens)

Check that under "set path=" or "set dpath=" has the root in it where config.sys is.

Check that under "set tmp=", the path doesn't include ANY spaces.

Check that RSJ daemon was added into config.sys as "run=" with or without "REM"

Delete older CDRWSEL.INI under your user_ini path.

If pre-V2.13.2 release had a correct drive list with the "refresh" option, you can add parameter -cdani (cdrwsel -cdani) to process "refresh" as under v2.13.1

sys3175 - set BUBBLE off

If speed didn't exceed 1x or 2x with high speed DVD media, uncheck bufsize if it was used.

RC20 during attach :

Check that the ctl and id numbers are correct. Normal drive list refresh can have incorrect values depending on your hardware configuration and driver loading sequence under your config.sys. If this is the case, change max ctl number to a higher value and run refresh (deep scan) with a CD inserted into the drives. Ready burners have a generic name starting with 'CDRW'. Use the found ctl.id to correct the normal refresh list

- If the drive was added under CDDRV.INF, check for correct syntax.
- To check RSJ attach command, run following command in an OS/2 window : cdattach z: -d CDR:x.y (x=ctl_number, y=id_number - the dot can be changed to ',')
- If You only have one burner on your system, try to use 'Single burner' option under setup

RMB Click is available under "V1 Window" only. Right-click on background !!

Attach or View failed :

Change the separator between ctl and id from "." to ",". May attach unpredictable drive under specific configuration (be carefull and do several tests).

DvD write errors with RSJ 5.xx :

Check which OS2CDROM driver your are using and try an other build. Very old or the very last build gives trouble on my system.

For any other problem :

Take screenshots of the failure and explain what you were doing when the problem arose. Take "view ini" screenshot and copy of config.sys and put both in a zipfile.

Start CDRWSEL with the flag -L (cdrwsel -l) and create the problem. At CDRWSEL close, file cdrwsel.log is created (usually under temp path). Add this file in the global zip file.

Send an email and specify "CDRWSEL usage problem" as subject and zipfile as an attachment.

MP3 to CD:

It looks that from time to time, WAV tracks created from MP3 files aren't copied by RSJ. This was the case this RSJ5.52 (not tested under 5.53)

WELCOME TO GUI CDRWSEL

Hardware Manager

- a/ Open system setup folder (should be on the WarpCenter)
- b/ Open Hardware Manager
 - * You should know under which DMA_CTLR you attached your CDRW
Mainboard manufacturer recommendation is : 0 for disk, 1 for others
 - * Before your CDR, you'll find
ATAPI_0 - Use 0 as id
ATAPI_1 - Use 1 as id
 - * For SCSI CDR (here is a exemple)
CDROM_(3,0)
| |
| +---> lun = 0 (this isn't the Ctl value)
+-----> id = 3

Part of my config.sys file (changes only drives needed to worm drive)

```
BASEDEV=DANIATAPI.FLT /!SCSI
REM BASEDEV=DANIATAPI.FLT or DANIATAPI.FLT /RSJ
(Special caution if the flag /RSJ is used . Set option to only use one driver to map IDE to SCSI.
If you use /RSJ on one unit, try to use /!SCSI on others) Read Dani's doc.
```

```
...
REM *** 2x HD - 1x DvD - 1x CDRW
REM BASEDEV=DANIS506.ADD /A:0 /BM /80WIRE /A:1 /BM /80WIRE
BASEDEV=DANIS506.ADD << UDMA & BM ok with build > n°168
...
REM *** S0=IDE_DvD S1=IDE_CDRW S2=SCSI_CDR S3=SCSI_CDRW ***
BASEDEV=OS2ASPI.DMD /ALL << If OS2ASPI is used, add /ALL
BASEDEV=LOCKCDR.FLT -S0 -S2 << Remove not used drivers
REM *** Remove lockcdr.flt if drive has to be used as reader and RSJ
REM *** In this case, update cddrv.inf with the correct entry
DEVICE=C:\CFS\RSJSCSI.SYS -s
IFS=C:\CFS\CDWFS.IFS -s
RUN=C:\CFS\CDWFS.D.EXE -p "C:/CDWFS/disk_cache" -c716800 -b10240 -t2 -i3 -s0
```

...
If CDRWSEL attach or view is not working, try previous '**red**' recommendations first (was reported by user).
IDE to SCSI drive mapping may affect different ctl.id to your devices than those really are. Now, "Refresh"
updates the not_burner_list and switches to "Deep refresh" if "/RSJ" is used or "/!SCSI" is missing. The
not_burner_list will be usefull to replace generic names if name resolution failed. (-s is new with RSJ 5.5x)

New options exist for LOCKCDR.FLT. Read RSJ documents for more information

WELCOME TO GUI CDRWSEL

12 / Change log

Thanks to Alan Townsend (Canada), Erik, Kevin, Tom, Mike, Nickk and all "Anonymous" and a special thank to Bernd, Jan Erik for their good suggestions and tests resulting in an improved CDRWSEL for all (exe and docs)

* New V4.0.2 (beta2)

Many corrections and added single command 'blank' or 'close session' or 'eject' or 'format'

* New V4.0.1 (beta1)

Simplified installation and :

1/ Added DVDDAO GUI

a/ CDRECORD2, MKISOFS2 and DVDDAO from nickk are required

CDRECORD2 - limited function, use of scanbus only

MKISOFS2 - many options may be set but default may be ok (setting is reserved to high expert)

DVDDAO - default is ok

b/ Support Jan-Erik "rxtnsion.dll" to get file size above 2GB

c/ files from selected device/hd are added to a new project. This project is then burned

d/ Only **marked** item from the container are burned on the target media (AUDIO_ST & VIDEO_TS are exceptions and must not be marked when in DVD Video mode).

e/ Save/import a project, append new project to an existing one, replace older project

f/ DVD2HD or DVD2DVD dialog allow Source DVD and target DVD/HD selection (HD for ISO files)

g/ DVD (seen as path) to DVD or HD uses upgraded dialog design with new icons. You can process datas or switch to DVD video (VIDEO_TS + AUDIO_TS). No ripping

2/ Changed configuration dialog to set CDWFS, CDRWSEL, DVDDAO, MKISOFS default parameters

3/ Updated filemanager (great speed improvement) and new functions like drag and drop (dvddao)

4/ Added a logbook to follow different process.

5/ Added bubble function (use it if needed only !)

4/ Added progress bar for DVDDAO (pipe function)

5/ changed kill or Pkill and Pstat by rxu.dll

6/ Started PID's by CDRWSEL dialog can list all system PID's. You can kill them using rxu functions

7/ Icon size customizable under main "V1 Window" and of course, it support limited drag/drop fonts/colors

8/ Change standard Main window buttons to pretty buttons (icon)

9/ Use of external *.cmd file to restart or restore default fonts/colors no more needed

10/ Only EN language is full supported for now (Fr is not full implemented).

11/ Main CDRWSEL , DVDDAO, RSJ GUI and CDRWHLP are now under the tasklist

12/ Corrected a few bug under RSJ GUI etc

* New V3.0.4 m007

1/ Corrected a visual bug under cdcopy after changing source path

2/ Now, Integrated filemanager can be called from 'V1 Window' popup with selected drive as default drive (FMan option)

And a few enhancement under **integrated filemanager**:

3/ Corrected a visual bug (list refresh)

4/ Now, directory can be renamed (RMB)

5/ Names with blank characters are supported

6/ Direct translate filename blank characters to underscore characters (popupmenu)

* New V3.0.4 m006

1/ Smaller 'expand' and 'collapse' icon, Smaller CDRWBMP.DLL file

2/ Corrected a crash using recurse on empty directory under 'cdcopy'

WELCOME TO GUI CDRWSEL

* New V3.0.4

- 1/ Added -SDM parameter
- 2/ Updated installation programs to add -sdm parameter as default.
- 3/ 6 CDRWSEL.ini file entries are now under one entry (performance issue)
note: older INI file is saved as CDRWSEL.BAK for fallback.
- 4/ Now, you can choose between kill and pkill process for the pid kill feature.
- 5/ Corrected several bugs
 - * If drive names differs for a few characters only, attach may use the wrong drive.
 - * MP3toCD function didn't stop process if MP3 conversion failed.
 - * MP3toCD conversion wrongly increases output wave file name after "9"
 - * A few other bug ...
- 6/ During background burn process, a program called CDRWpba.exe (e.g. progress bar program) can be started. Available parameters are burn progress temp file name, burn commands etc... (function is activated if cdrwpba exist under cdrwsel directory)
- 7/ Changed docs and CDRWSEL help file.
- 8/ Changed some coding to reduce line code.

* New V3.0.3

- 1/ Ctl and Id input field are checked for numerical value
- 2/ Corrected a Bug with DVD when finalize is requested while burning is in progress.
- 3/ If drive name contains "DVD" during refresh and speed is enable, 4x is use as default
(for DVD, I suggest to use max speed or reset the speed to max to prevent write errors)
- 4/ Corrected a bug using the eject option from "V1 window" RMB menu.
- 5/ Refresh or Deep Refresh add now a default Drive with Ctl=99 and Id=99 (these values are ignored during process and result into a CDR: parameter (This entry is needed if you would like use cdview to burn your ISO file. Adding RECORDER entry under Vpath is no more needed but available)
- 6/ Now, ISO->Cd, Trk->CD, Wav->CD, MP3->CD and Cdcopy are available under "J Window" popup menu (Click 2 times on a drive calls this menu).
From this window style, each option except Cdcopy prompt you for a path where files are supposed to be.

* New V3.0.2 m008

- 1/ Added " -NVC " option to correct a bug when a specific Norman Virus Control option is enabled (see help file)
- 2/ New CDRHLP.DLL file which size decreased from 2.2MB to 800KB

* New V3.0.2 m007

- 1/ Corrected a speed selection disable/enable bug under trkcopy window
- 2/ Corrected and changed multiple 'detach' request for MP3toCD function
 - Use of specific temp directories for each request instead the same temp directory to prevent *.WAV deletion
- 3/ Use of a different coding format for a few external commands
- 4/ Added an enable CDROM OP/CL under settings (setup menu). To activate if cdrom.exe is installed (used to enable close of cdrom door)
- 5/ Added 'Close' under main 'view' window popupmenu if CDROM OP/CL enabled
- 6/ Added 'Eject' under main 'attach' window popupmenu (enabled on 'Free' drive status)
- 7/ Ready for futur progress bar display for background processes (external function).
- 8/ Updated *.htx files
 - Restriction : multiple background request on a same burner not allowed (must be different)

WELCOME TO GUI CDRWSEL

* New V3.0.2

- 1/ "Background process" for finalize added (usefull to get control for an other finalize)
- 2/ Added version in main window and updated help files.

* New V3.0.1

- 1/ First CDRWSEL run without cdrwsel.ini file needs one check only.
- 2/ New scroll message under "V1 Window" removable with a key file
- 3/ New updated Setting window with an enable/Disable icon tool bar
- 4/ New updated "Define INI parameters" with two checkbox for 'V1' Icon size selection (this allow you 3 possibilities):
 - None is selected = Normal size (old icon size)
 - 1 is selected = Medium size (smaller that normal)
 - 2 is selected = Smallest icon sizeRestart is not needed. Icon size change is always validated (cancel didn't restore icon size to original size)
- 5/ Vpath updated to include a button to call "paths dialogue"
- 6/ "Paths dialogue" added to have easy path selection. del/ren functions exist.
- 7/ Right mouse button on a selected drive from "view" mode under "V1 Window" or Enter on a selected drive from "J-Window"
Popup Menu has more functions with new dialogue :

trkcopy	1/Expert (If you don't know all trkcopy fonctionn you may do uncompatible selection. For expert user only) 2/Data (copy of RSJ specific *.TRK files) 3/Audio (copy of *.WAV files (creates CD-Audio if target=CD-R) 4/DAO (DAO image of audio CD) 5/Video (sector size of 2336 bytes (instead of 2048 bytes))
Trk2Iso	(copy *.TRK to a target directory and change it to *.ISO file. trk2iso.exe from hobbes is required - added in the test package only)
iso->CD	Create a CD from an ISO image file
trk->CD	Create a CD from RSJ trk image file
wav->CD	Create a CD audio from WAV files
mp3->CD	Create a CD audio from MP3 files (Z.exe from hobbes required. Added in the test package only)
- 8/ CDcopy enabled
- 9/ Multi language support added to the new functions (create language file)
- A/ New standalone help added (CDRWSEL has pointers to specific help section)
(If the new help is installed into CDRWSEL path, it replaces CDRWSEL.doc)
This help program uses a bitmap.dll and a *.htx file as input

* New V2.14.0

- 1/ When you run "refresh", you could see that the list is updated with CD-ROM, DvD-rom and burners. Now, each deleted device from the list (which aren't burner) are saved in a not_burner list for futur use.
- 2/ "Refresh" procedure has changed. It removes the need of "SCSI on second PCI bus" option. If /!SCSI isn't used or /RSJ is on daniatapi driver (cdrecord compatibility), process switches to "Deep refresh" during normal "Refresh" and updates a device_list used during "Deep refresh". (**Big change to improve ctl.id & names in the drive list**)
- 3/ CDRWSEL INI file has a new key : CD_dvd (deleted devices from the drive list)
- 4/ "?" can be used in the Vpaths window to open a popup window with deleted device list (1) or resulting from "Refresh" switch process. Click on a device and the line is updated but you have to change the drive letter to the correct value. Defining on Vpaths entry as RECORDER (uppercase) allows to open a [CDVIEW CDR:]. Usefull to burn ISO file with RSJ cd-view
- 5/ "?" in "Volume ID:" or RMB on frame border opens a popup window to save or restore a current finalize comments. Up to 10 profiles can be saved.

WELCOME TO GUI CDRWSEL

- 6/ When you are in "View" mode with added cd-rom. Select a "free" cd-rom and click RMB to open a popup menu. If you select trkcopy + DAO, a new popup window allows you to chose writing speed (1x to 12x).
Than specify the target CD-RW (If the CD-RW is in your "V1 window" list, just give the right drive letter and it will find it (ex : Z))
- 7/ A new popup menu can be opened with a RMB click on each background window.
 - under each Window style, it allows to reset "reset fonts & colors" and "used drive letter list" (updated each time you do an attach but can disable drive letter if you didn't close de CD from CDRWSEL).
- 8/ Short help popup message are available on several part of several window (RMB)
- 9/ Create CD from ISO files (RMB on the HD path ("V1 window") where iso files are and select Iso2CD.
- A/ Emergency Eject (big button) has now a normal size and is aligned with other buttons.
- B/ With cdrwself.cmd in the same directory as cdrwsel enables automatic cdrwsel restart after window style change.
- C/ Added a small "trace debug" option enabled with -l parameters (output=cdrwself.log)
- D/ A few bugs corrected
 - * User program list not correctly saved under "Define ini parameters" window
 - * Old "Refresh" procedure gives wrong results in complex configuration or with cdrecord
 - * Changed a few text field
 - * Corrected a few more minor bugs.

WELCOME TO GUI CDRWSEL

A / Author comments

THE SOFTWARE IS PROVIDED "AS IS" AND WITHOUT ANY EXPRESS OR IMPLIED WARRANTIES. THE ENTIRE RISK AS TO THE QUALITY AND PERFORMANCE OF THE PROGRAM IS WITH YOU. SHOULD THE PROGRAM PROVE DEFECTIVE, YOU ASSUME THE COST OF ALL NECESSARY SERVICING, REPAIR OR CORRECTION.

Virus free (Norman scan) under my system on 08/08/2005 (MM/DD/YYYY)

YES , IT IS FREeware :-)

(c) Remy Dodin

PS: I'm Scanning RSJ news site regularly !
For any suggestions / Bugs -> <mailto:remy.dodin@libertysurf.fr>
If Mozilla is your browser, use the "write to author" option