

HandiTrack

Version 2

User's Manual



<http://handitrack.homestead.com>
handitrack@yahoo.com



HandiTrack User's Manual

Table Of Contents

1	Introduction.....	3
2	Installing HandiTrack.....	3
2.1	Steps to Carry Out on Your Computer	3
2.2	Steps to Carry Out on Your Handheld.....	4
3	Converting From an Earlier Version of HandiTrack.....	4
3.1	If You Didn't Use an Earlier Version of HandiTrack	4
3.2	If You Used an Earlier Version of HandiTrack	5
3.3	Deleting the Prior Version of HandiTrack	5
4	The Basics	6
4.1	Limitations of the Trial Version of HandiTrack	6
4.2	Registering Your Copy of HandiTrack.....	6
4.3	What You'll See at First – The Main Screen.....	7
4.4	Handicap and Handicap Trend.....	7
4.5	Adding a Score	8
4.5.1	Entering a New Course, Tees, Rating and Slope.....	10
5	Additional Features	11
5.1	Averages.....	11
5.2	Handicap Details	12
5.3	Handicap History	12
5.4	Handicap Report	13
5.5	Personal Records.....	13
5.6	Score To Lower	14
5.7	Edit Menu - Edit Course/Tee Combos.....	14
5.8	Configure Options.....	15
5.9	Diagnostics.....	16
5.10	Force Recalc	16
6	Tips and Tricks	16
6.1	Dotted Lines Around Data or Text.....	16
6.2	How Will Different Scores Affect My Handicap?.....	16



HandiTrack User's Manual

1 Introduction

Welcome to HandiTrack, your handheld golf handicap tracker. Many people have heard of a golf "handicap" but don't know how to calculate one. Other people simply can't wait for infrequent updates on their handicap... they want to know right after a round how their handicap has been affected.

HandiTrack addresses all of these problems. HandiTrack also provides some nice barometers and statistics to track your progress with your golf game.

As always, keep in mind that the results from HandiTrack are for information only and should in no way be construed as official. The only handicap allowable for use in tournaments is the one issued by your club or other official organization.

This manual will walk you through the basics to get you going, and then introduce some of the advanced features and tricks that you'll find useful when using HandiTrack. We hope you'll enjoy staying on top of your game with HandiTrack. Hit 'em straight!

2 Installing HandiTrack

2.1 Steps to Carry Out on Your Computer

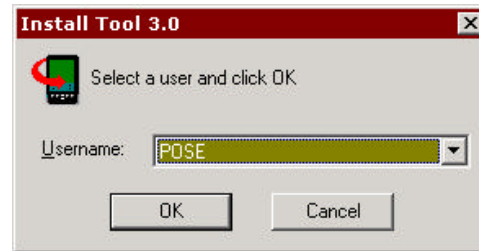
Carry out the following steps on your PC or Macintosh computer.

- ❑ You can download HandiTrack from a number of web sites that offer software for Palm OS based handhelds. These sites include:
 - <http://handitrack.homestead.com>
 - <http://www.handango.com> - Search for HandiTrack
 - <http://www.palmgear.com> - Search for HandiTrack
- ❑ Save the .zip file to your computer, remembering where you saved the file.
- ❑ Unzip the file, again remembering where you place the extracted files.
 - If you do not have an unzip utility, you can find a free trial at <http://www.winzip.com/>.
- ❑ You will find a number of files. Double-click on the file named "HandiTrack-Install.prc".






HandiTrack User's Manual

- ❑ This will launch the Palm Desktop Install Tool.
 - If the Palm Desktop Install Tool does not launch, you need to install the Palm Desktop software. You'll want to make sure to install the right version for your handheld. Handheld manufacturers typically offer the desktop software for free download from their web site.
- ❑ Choose the username for the handheld onto which you want to install HandiTrack.
- ❑ Follow the prompts, choosing Done.



2.2 Steps to Carry Out on Your Handheld

Carry out the following steps on your handheld.

- ❑ Go to the "launcher " on your handheld.
 - This is done by tapping on the "home" icon. (e.g. )
- ❑ Go to the "Unfiled" category by choosing "Unfiled" in the upper right of the launcher window. (e.g. )
- ❑ Tap on the "HT Install" icon.

- ❑ This will launch an installation screen. Tap on "Start" to install HandiTrack.
- ❑ HandiTrack will then be installed and started.

3 Converting From an Earlier Version of HandiTrack

3.1 If You Didn't Use an Earlier Version of HandiTrack

You will be prompted to confirm that you did not have an earlier version of HandiTrack installed. When you confirm that you are a new user, HandiTrack will delete a number of files that are not necessary for new users of HandiTrack. You will have the same access to the full features of HandiTrack, as would a user of a prior version of HandiTrack.



HandiTrack User's Manual

3.2 If You Used an Earlier Version of HandiTrack

You will be prompted to walk through a conversion process. This process converts the data from the past version and then imports it into the new version.



If for some reason you do not want to do the conversion or import at this time, you can choose "No." You will not be prompted again. You must then use menu choices to do the conversion and/or import of data. In this case, HandiTrack will "think" that you've already done the conversion and import, and will issue warnings. You can ignore the warnings, but *be careful not to carry out the conversion or import process more than once*. Duplication of data can result if either process is done more than once.

The prior version of HandiTrack did not track statistics on the number of fairways hit. Thus, the course data stored in the prior version has no information on number of fairways.

During the conversion HandiTrack will fill in a default value of 14 for the number of fairways for EVERY COURSE. This may be incorrect, as some courses are configured such that they have more or less than the "normal" four par 3 holes.

After the conversion is done you can edit the number of fairways for a course by choosing the Edit menu option, then choosing "Edit Course/Tee Combos". This screen is explained later in this manual

3.3 Deleting the Prior Version of HandiTrack

Before deleting the prior version it is advisable to make sure the data from the prior version was converted correctly and that the new version is working well.



HandiTrack User's Manual

To delete the prior version completely, you can delete the following files from your handheld.

- ❑ NOTE: Deleting files is accomplished by going to the application launcher, or "home" on your handheld. Tap on the menu icon and choose the "App" option. Then choose "Delete". You will be presented with a list of files. Tap on each file listed below and choose "Delete...".

Files to Delete to Remove Prior Version of HandiTrack

❑ Delete me!	❑ SF-SE_SysHeap
❑ H-Track	❑ SFE_Graphics
❑ HT Convert	❑ SFE_PilotNm
❑ Sat. Forms SE RDK 3.1	

4 The Basics

4.1 Limitations of the Trial Version of HandiTrack

The trial version of HandiTrack is completely functional. All screens are accessible and there is no time limit. You are limited to adding only 7 scores. Upon entering 7 scores you will still be able to access all statistics and other features of HandiTrack, but you will not be able to add more scores.

4.2 Registering Your Copy of HandiTrack

For information on how to obtain a registration key for HandiTrack, visit: <http://handitrack.homestead.com/>. If you've downloaded HandiTrack from a site such as PalmGear or Handango then you will receive registration information directly from them. In any case, you can always contact HandiTrack with any questions at handitrack@yahoo.com.

To register, once you've received your registration key:

- ❑ Open HandiTrack to the main screen.
- ❑ Tap the silk-screened menu button on your device.
 - On some handhelds you can tap directly on the title bar at the top of the screen.
- ❑ Tap on the "Help" menu option, and choose "Register".
- ❑ Enter the registration key you were provided, and then tap the "Register" button. You're off and running!



HandiTrack User's Manual

4.3 What You'll See at First – The Main Screen



When you first open HandiTrack you'll see a screen like the one to the left.

Once you start adding scores, the main screen will display your handicap and your handicap trend over the last three rounds.

Initially the main screen will show a value of "---" for your handicap and for the handicap trend.

This is because HandiTrack needs 5 or more scores to calculate your handicap, and needs 8 or more scores to calculate your handicap trend. Upon entering the required number of scores, you will then see real values instead of the placeholders.

Any data that you've converted from a past version of HandiTrack counts towards the total number of scores.

4.4 Handicap and Handicap Trend

Once you've added the required number of scores the main screen will always provide you with a snapshot of your handicap status.



The "Current Handicap" shows your current handicap taking into account all scores that you've added to the system.

The "Handicap Trend" shows the trend of your handicap over the most recent 3 rounds. The trend is shown with three symbols. The symbol on the left represents 3 rounds ago, the one in the middle two rounds ago, and the one on the right represents your most recent round. Each symbol indicates if the score you shot that round lowered your handicap ("-"), increased your handicap ("+"), or whether your handicap was unchanged by the round ("E"). In other words, you want to see a row of minus signs, which would mean your handicap is trending down.

4.5 Adding a Score

Tap on the "Add a score..." button on the main screen. You'll see a screen like the one below. HandiTrack will automatically fill in data for you as you fill in values for course and other fields.

Following is an explanation of each field you see:

- **Date:** The date on which the round being added was played. The date is important in handicap calculations, so make sure it is correct if you are adding a number of rounds that were played in the past.



- **Round Type:** Indicates that you played away from your home course, or that the round was part of a tournament. Currently HandiTrack does not use these fields in its calculations, but these fields can sometimes be useful.

- **Course:** Choose a course from the ones you've entered previously, or choose "-NEW-" to enter a new course.

□ **Tees:** Choose the tees from which you played for this round. If you've previously played this course, this may be filled in automatically by HandiTrack

- **Holes:** Choose the number of holes that you played. Choose "-NEW-" if you need to enter a rating and slope for a set of holes not yet stored in HandiTrack.



- **Front/Back:** This field will only appear if you've chosen "9 Holes" as the number of holes. Specifies whether you're adding a score that you shot on the front 9 or back 9 holes of a course.

- **Rating:** The rating of the course for a particular set of tees. This will appear automatically, using the values you

specified when you entered the course and tee data.

- **Slope:** The slope of the course for a particular set of tees. This will appear automatically, using the values you specified when you entered the course and tee data.

- **Score:** This is the score you shot for this round. After entering the score, when you tap on another field the differential and your new handicap will be calculated and displayed on the screen.



HandiTrack User's Manual

In the prior version of HandiTrack the differential and the new handicap would be calculated after a few seconds, even if you did not tap on another field.

The new version requires that you tap on another field to trigger the calculations.

- ❑ **Putts:** You can track the number of putts you made during this round. This can be a good measure of golf progress. If you don't track the number of putts you take, you can remove this field. (See the discussion of "Options" later in this manual.)
- ❑ **Fairways:** The number of fairways you hit in this round. The total number of fairways for the course will appear automatically, using the values you specified when you entered the course and tee data. If you don't track the number of fairways you hit, you can remove this field. (See the discussion of "Options" later in this manual.)
- ❑ **GIR:** This stands for Greens In Regulation. This is the number of greens you hit in regulation. (Regulation is the number of shots for par on a hole, minus two. So, for a par four, a green in regulation means you were on the green in two shots.) If you don't track the number of greens you hit in regulation, you can remove this field. (See the discussion of "Options" later in this manual.)

It might happen that you regularly track a statistic but for some reason for a certain round you do not have the required information.

You can leave the field blank on the add score screen. HandiTrack will prompt to make sure you want to skip the statistic for the one round, and the averages and records screens will simply skip this round in the calculations.

- ❑ **Differential:** This is the handicap differential for the round you are adding. It represents how you shot that day, taking into account the difficulty of the course. This is filled in automatically.
- ❑ **Handicap Before/After:** This is your handicap before the round currently being added, and your handicap after the round being entered is added. This is filled in automatically.



HandiTrack User's Manual

4.5.1 Entering a New Course, Tees, Rating and Slope

When you choose "-NEW-" from one of the dropdown lists in the Add a Score screen, you'll see a screen like the one below. To enter a new course and tees, do the following:

- ❑ Tap on the triangle next to the word "Course" and choose "-NEW-" or choose an existing course. Choosing "NEW" will take you to a screen where you enter the name of the new course.

- ❑ Tap on the triangle next to the word "Tees". Either choose one of the tees listed, or choose "-NEW-" to enter the name of a new set of tees.
- ❑ Choose the number of holes for this course/tee combo. Choosing 9-holes will then enable you to choose whether this is for the front or back 9 holes.
 - If you've chosen to enter a 9-hole course/tee combo, you will be prompted as to whether you have a rating and slope specifically for this set of 9 holes. If not, you can input the 18 hole values and HandiTrack will calculate an approximation for the 9-hole value.
- ❑ Enter the rating and slope for the course AND THE PARTICULAR SET OF TEES that you've entered in this screen. Each set of tees for a course will typically have a different rating and slope, and thus will require a separate entry.
- ❑ Enter the number of fairways for this particular course/tee combo. Even if you are not currently tracking statistics for fairways hit, you might want to enter a value for future reference.
 - The number of fairways can be calculated by taking the number of holes overall (e.g. 18) and subtracting the number of par 3 holes (e.g. 4) on the course. While a typical course has 14 fairways, some have more and some have less.
- ❑ Tap the "Done" button, and you will be returned to the "Add a Score" screen, with the data you've just entered automatically filled into the appropriate fields.

Once you've entered a new course/tee combo the data is stored in the system. The next time you play the same course and tees the information will be filled in automatically.



HandiTrack User's Manual

5 Additional Features



HandiTrack offers a number of useful features beyond the tracking of your handicap. You can access these features by tapping on the menu button on your handheld.

Your screen will look like the screenshot to the left. Tap on a menu choice to access the feature.

5.1 Averages

The averages screen shows you your averages for various statistics. The averages are taken overall, as well as over your last 5 and last 10 rounds. This allows you to see trends for the different statistics. Uncombined 9-hole scores are not used in calculating the averages. Combined 9-hole scores are used in calculating the averages.

Averages			
Course	All	Last 5	Last 10
15 Rounds	81.4	86.0	84.0
Avg Score	81.4	86.0	84.0
Avg Diff'l	9.7	13.3	12.1
Avg Hdcp	8.5	7.7	8.3
Avg Putts	31.8	31.4	31.7
GIR %	60.7%	59.7%	60.4%
Fwys %	72.5%	73.4%	72.7%

You can see your averages for a particular course by tapping on the triangle at the top of the screen and choosing a course. HandiTrack will tell you how many rounds you've added for that course, and will present your averages for that course. If you've added at least 5 or 10 scores, you'll see the averages for those time periods as well.

Tapping on the "Print to Memo..." button will allow you to print a copy of the averages report to the Memo Pad application on your handheld. This allows you to save the report, synchronize it to your computer, and copy it to another application or print it out.



HandiTrack User's Manual

5.2 Handicap Details



The screen shows the following information:

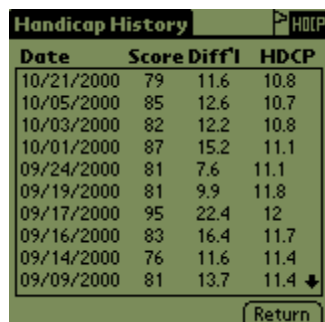
Handicap Details			
# of Scores: 25			
Scores Used: Best 10 of last 20			
Scores To Be Bumped			
	Date	Score	Diff'l
1st	07/16/2000	86	15.8
	Glenview		
2nd	07/23/2000	85	13.5
	Skywest		
3rd	07/27/2000	81	13.1
	Poplar Creek		
Return			

This screen provides a range of information on the scores that were used to calculate your handicap. Only certain numbers of scores are used in the calculation, as indicated on this screen.

Once you've added 20 scores, each time you add a new score one of your old scores is "bumped" from the calculations. This screen shows you which scores are due to be bumped. This can be useful information.

Low scores being bumped means your handicap might soon go up unless you shoot another low score to replace the bumped score. High scores being bumped means your handicap might be on its way down if you shoot a low score to replace the bumped score.

5.3 Handicap History

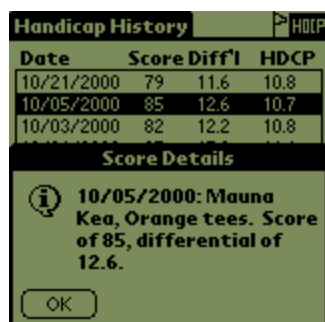


The screen shows the following information:

Handicap History			
Date	Score	Diff'l	HDGP
10/21/2000	79	11.6	10.8
10/05/2000	85	12.6	10.7
10/03/2000	82	12.2	10.8
10/01/2000	87	15.2	11.1
09/24/2000	81	7.6	11.1
09/19/2000	81	9.9	11.8
09/17/2000	95	22.4	12
09/16/2000	83	16.4	11.7
09/14/2000	76	11.6	11.4
09/09/2000	81	13.7	11.4
Return			

The handicap history screen shows the trends in your handicap. All of your scores are listed here, along with the differential for that day, and your handicap after that particular score was added. This screen shows if your handicap was trending up or down at a given time.

You can scroll down using the up/down keys on your handheld, or you can tap on the arrows in the upper and lower right side of the screen.



The screen shows the following information:

Handicap History			
Date	Score	Diff'l	HDGP
10/21/2000	79	11.6	10.8
10/05/2000	85	12.6	10.7
10/03/2000	82	12.2	10.8

Score Details

10/05/2000: Mauna Kea, Orange tees. Score of 85, differential of 12.6.

OK

You might be curious to know more about one of the scores listed on this screen. Just tap on that score and you'll get the full details about that round, as shown to the left.

If you delete a score, the handicap data presented on this screen might not be accurate for some scores you entered BEFORE deleting the score. All scores added AFTER the deletion will show correct data here. In all cases the handicap shown on the main screen is accurate.



HandiTrack User's Manual

5.4 Handicap Report

The handicap report screen displays your current handicap and shows which of your recent scores were using in calculating the handicap.

Handicap Report		HELP	
Current Handicap 10.0			
1-4	81U	86	81U 83U
5-8	79U	85	82U 87
9-12	81U	81U	95 83
13-16	76U	81	85U 87
17-20	90	92	80U 86
Return			

A "U" after the score indicates that this score was used in the handicap calculations. This indicates that it was one of the better rounds played recently.

Tapping on any of the scores displayed will display the detail for the round.

5.5 Personal Records

Ever wonder what your personal records are, either overall or at a particular course? HandiTrack can tell you.

Personal Records		HELP	
Course	▼ All Combined		
41 Rounds	Ever Last5 Last10		
Lowest Score	72 79 79		
Lowest Diff'l	.8 8.9 7.6		
Lowest Hdcp	8.8 10 10		
Lowest Putts	30 30 30		
Highest GIR	12 12 12		
Highest Fwys	13 11 11		
Print to Memo...		Return	

Just enter the personal records screen, and everything is calculated for you. The different records are calculated overall, and also over your last 5 and last 10 rounds, allowing you to see trends. Uncombined 9-hole scores are not used in calculating the records. Combined 9-hole scores are used in calculating the records.

You can find your records for a particular course by tapping on triangle next to the word "course". This will allow you to choose from all the courses you've played. HandiTrack will tell you how many rounds you've played on that course, and will show you the records for that course.

Tapping on the "Print to Memo..." button will allow you to print a copy of the averages report to the Memo Pad application on your handheld. This allows you to save the report, synchronize it to your computer, and copy it to another application or print it out.



HandiTrack User's Manual



Who can resist basking in the past glory of a good round? You can find out more about each of your records by tapping on any of the records listed on this screen. In this example, we've tapped on the "30" for the lowest number of putts. This has popped up a screen giving us the details for that particular personal record round.

5.6 Score To Lower



The score to lower screen will show you the score you need to shoot on a particular course in order to lower your handicap. This can be useful to establish a target score for your next round. Choose a course and tee combo, and the rating and slope information will be filled in automatically. Then tap on the "Calculate" button, and HandiTrack will calculate the score you need to shoot.

5.7 Edit Menu - Edit Course/Tee Combos



The edit menu provides a number of screens that allow you to see which data is stored in the system, and allows you to delete items that are no longer useful.



The Edit Course/Tee Combos screen allows you to update the number of fairways for a given course. The conversion process from the prior version of HandiTrack inserts a value of 14 by default, since the past version did not store data on the number of fairways for courses. This screen allows you to change the value to the correct number of fairways.



HandiTrack User's Manual

SPEED TIP: Certain features of the Add Score screen will perform more quickly when there are fewer course/tee combos stored in HandiTrack. Thus you might want to delete some course/tee combo records if you do not intend to play the courses on a regular basis.

Past scores added for that combo will NOT be affected, and you can always re-enter the data if you do play the course again.

It is OK to delete courses and tees that you don't plan on playing again. Past scores you've added using the course or tees will remain intact and will still be used in the handicap calculations.

You might choose to delete such records since it will make the dropdown lists shorter and easier to use when adding scores.

5.8 Configure Options



This screen allows you to elect what statistics to track when you add a score.

A checkmark next to a value means that the statistic will be tracked and that the field will show up on the "Add a Score" screen. Tap on a checkmark to toggle an option off.

These statistics do NOT enter into the handicap calculations, so it is OK not to track them.

It might happen that you regularly track a statistic but for some reason for a certain round you do not have the required information. You can leave the field blank on the add score screen. HandiTrack will prompt to make sure you want to skip the statistic for the one round, and the averages and records screens will simply skip this round in the calculations.



HandiTrack User's Manual

5.9 Diagnostics

This screen outputs information about the internal data structures that HandiTrack uses to do its calculations. This screen would be of use only if you are in contact with HandiTrack support trying to resolve an issue with the product. You have the option of seeing the data on the screen or outputting the data to a memo in the Memo Pad application. This screen has no effect on any of the data or handicap calculations.

5.10 Force Recalc

This screen will “force” a recalculation of your handicap when you return to the main screen. This can be useful if you are in contact with HandiTrack support and it is determined that for some reason HandiTrack’s internal data structures have become out of synch with the data in the system. This screen will have no effect on the scores or other data stored in the system.

6 Tips and Tricks

So now you’ve mastered the basics and tried all of the features of HandiTrack, and you want more! You’ve come to the right place.

6.1 Dotted Lines Around Data or Text

Any time you see a dotted line around text or numbers in HandiTrack you’ve seen an indication that further information is available. Just tap the screen within the dotted boundary and you’ll be presented with further information on the data in question.

6.2 How Will Different Scores Affect My Handicap?

Picture the following scenarios:

- ❑ You’re getting ready for a round at your favorite course, and you’d love to know how different scores would affect your handicap.
- ❑ You’re about to add a score, and you’d like to see what your handicap would have been if you had made a few more putts, or if you hadn’t tried to hit a miracle shot from the trees.

With HandiTrack you can find out. Just go to the “Add a Score” screen and enter all of the data as you normally would for a round, but DON’T TAP THE DONE BUTTON. You can now enter different values for the score, tap on a field other than the score, and see how this would affect your handicap. Each time you enter a score on the screen, you can tap on another field and HandiTrack will recalculate the values.