

Critic's Corner User Guide

Version 1.0



X-Act! Software LLC

Critic's Corner User Guide

© 2003 X-Act! Software LLC
www.x-act.com

This manual, as well as the software described in it, is furnished under license and may be used or copied only in accordance with the terms of such license. The content described in this manual is for informational use only, and is subject to change without notice. X-Act! Software LLC assumes no responsibility or liability for any errors or inaccuracies that may appear in this manual.

Table of Contents

<u>Using Critic's Corner</u>	2
<u>Overview</u>	2
<u>Getting Started</u>	2
<u>Creating a New Review:</u>	3
<u>Viewing a Review:</u>	3
<u>Finding a Review:</u>	5
<u>Deleting a Review:</u>	4
<u>Entering Review Information:</u> ...	5
<u>Filtering Reviews:</u>	6
<u>Managing Review Types:</u>	6
<u>Getting Help</u>	6
<u>Miscellaneous</u>	6

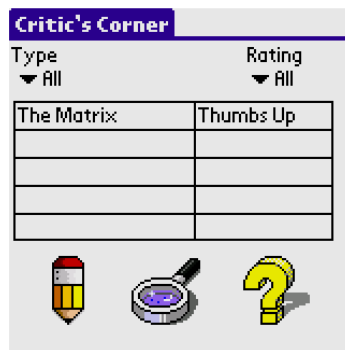
Using Critic's Corner

Overview

Critic's Corner is an application that helps you easily keep track of your reviews, opinions and critiques. **Critic's Corner** is simple, yet flexible. It supports a variety of rating scales, including *5-star*, *Thumbs* (up/down), and *Olympic* (10 points). In addition, you can export your reviews to the Palm MemoPad application, so you can synchronize your reviews with your desktop using Hotsync. Whether you are a professional reviewer or an “armchair critic”, you will find that Critic's Corner is adept in keeping track of the most important opinion in the world – yours!

Getting Started

Critic's Corner (or *CC* for short) is easy to use. To get started, simply tap on the Critic's icon on your application screen. After displaying the “About...” screen, *CC* presents the *Critic's Corner Window*. The *Critic's Corner Window* displays a table that lists the available Reviews by name and rating. The *Critic's Corner Window* also allows you to perform review-management activities, including:



- View an existing review
- Filter the reviews shown by type and/or rating
- Create a new review
- Search for a review by name

If this is your first time running *CC*, you will find that there is one pre-fabricated sample review (*The Matrix*) already listed. We included this review as an example, so you could see how things work.

There are three command buttons at the bottom of the *Critic's Corner Window*. These buttons allow you to easily access some of *CC*'s features:



Creating a New Review:

1. From the *Critic's Corner Window*, tap on New Review (the pencil command button). The *New Review Window* appears, showing a list of available *Review Types*.
2. Select the type of review you want (or "Other..." if you want to create a new Review Type – see example 2, below).
3. Tap the Ok button to complete the operation.

Two examples follow:

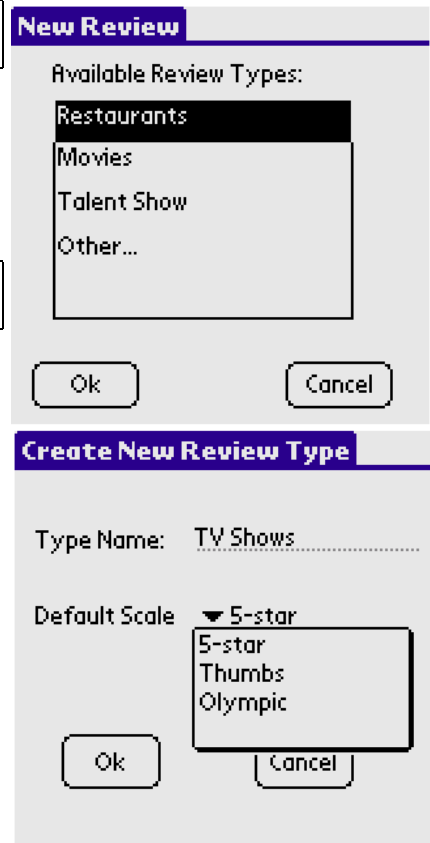
Example 1: New review using an existing Review Type

1. Tap the New Review command button
2. Select "Restaurants" from the Available Review Types list, and then tap the Ok button.

Example 2: New review with a new, user-defined Review Type

1. Tap the New Review command button
2. Select "Other..." from the Available Review Types list, and then tap the Ok button. The *Create New Review Type Window* appears.
3. Enter "TV Shows" as the name for this Review Type, and select the default scale to be *Olympic* (10 point scale).
4. Tap the Ok button.

In this example, we specified the Olympic scale to be the default scale for TV Show Reviews. You can always override the default for any Review, and use any scale you wish.



Viewing a Review:

1. From the *Critic's Corner Window*, tap on a Review to select it. The *Review Window* appears, displaying the Review. From here, you can:
 - Edit information
 - Re-rate the Review
 - Export to MemoPad
 - Delete the Review



The style in which the Review is presented depends on the scale selected for the review. The three possibilities are illustrated below:

Review [Export] [Trash]

Restaurants

Review Name: Chez Moi

Review Date: Mar 20, 2003

A fantastic taste of Canadian-French cuisine

Rating: ★ ★ ★ ★ ★

More...

Ok Cancel Re-Rate

5-Star

Review [Export] [Trash]

Movies

Review Name: The Matrix

Review Date: May 10, 1999

Wow! This movie is Fan-tastic! Great action

Rating: [Thumbs Up]

More...

Ok Cancel Re-Rate

Thumbs Up/Down

Review [Export] [Trash]

Talent Show

Review Name: Gong Show

Review Date: Mar 20, 2003

Ugh! Please, no more!

Rating: 2

More...

Ok Cancel Re-Rate

Olympic (10 point Scale)

Editing a Review

You can edit and update all the information for a Review, except its name. Simply change the desired information, and then tap the Ok button. If you change your mind and decide not to keep the updates, press the Cancel button. To re-rate a Review, see the following section.

Re-rating a Review

To change a Review's rating, tap the Re-Rate button. The Ratings and Scale dropdowns appear, allowing you to change the Review's rating and scale, if you desire. After re-rating the Review, tap Save to accept the changes, or Cancel to discard the changes.

Exporting to MemoPad

To export a Review to MemoPad, tap on the Export button on the *Review Window*.

Review [Export] [Trash]

Restaurants

Review Name: Chez-Moi

Review Date: Mar 20, 2003

A fantastic taste of Canadian-French cuisine

Export Button

Deleting a Review

1. From the *Review Window*, tap Delete (the trashcan command button).
2. A confirmation dialog appears. If you are sure you want to delete the review, tap Yes.

Review [Export] [Trash]

Talent Show

Review Name: Gong Show

Review Date: Mar 20, 2003

Ugh! Please, no more!

Confirm Delete

? Do you really want to DELETE the review: Gong Show?

Yes No

Finding a Review:

1. From the *Critic's Corner Window*, tap Find.
2. Enter the name of the Review you want to find, and tap the Ok button.

The search feature is case sensitive, so “Matrix” is not the same as “matrix”. Additionally, the search feature using a “best fit” matching, so you don’t have to always enter the entire name of the review you’re looking for. If your database contains a Review named “The Matrix”, you can enter “The Ma” in the *Find Window* and get a match.

Find Review

Review To Find:

Ok Cancel

Find Review

Review To Find: The Ma

Search Results

Could not find an exact match(spelling/case); matching next closest review...

Ok

Entering Review Information:

Information for a Review is entered in the *Review Window*. When you are satisfied with the information you’ve entered for a Review, tap the Save button. If you decide to discard the Review before it has been entered into the database, tap the Cancel button.

Rating a Review

In the *Review Window*, use the Rating dropdown to specify a rating. For convenience, the scale you selected for the Review Type is automatically used. This is a convenience feature only – you can use **any** scale for **any** Review, simply by selecting the desired scale from the Scale dropdown. For example, by default, Movies are set to use the Thumbs scale. However, you can use the 5-star or Olympic scales on any movie review you want, by choosing either of those from the Scale dropdown.

Review

Movies

Review Name: Proof of Life

Review Date: Apr 11, 2002

Another Crowe Film

Rating: ▼ Thumbs Up

Scale: 5-star, Thumbs, Olympic

Save Cancel

More Information

In addition to the notes in the *Review Window*, you can enter additional information (e.g. address, other notes, etc.) in the Additional Information page. To do so:

1. From the *Review Window*, tap the More... button. The *Other Info Window* appears.
2. Enter your text, and then tap the Ok button.

Other Info

Additional Information

Ok Cancel

Filtering Reviews:

Critic's Corner makes it easy for you to view specific Reviews that fit some criteria by using filter dropdowns on the *Critic's Corner Window*. You can set the filter by Rating and/or Review Type and have the application show you only the Reviews that are important to you at the time.

To filter the Review list:

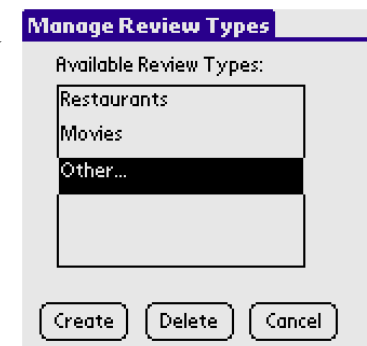
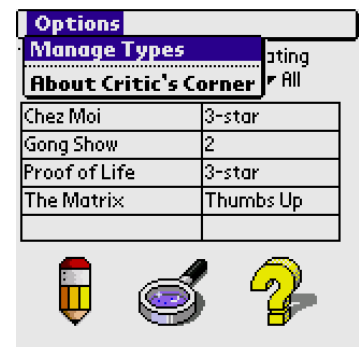
1. Select one or both of the filter dropdowns, and choose the desired criteria. The Review list is automatically updated with the Reviews that match the criteria set in your filter dropdowns. To show all Reviews, set both filter dropdowns to "All".

Managing Review Types:

You can create a new Review Type without having created a Review. This may be useful if you know in advance the type of Reviews you want to conduct – you can create the Review Type upfront, and then create a set of Reviews later. Additionally, you can remove unwanted Review Types, if you find you no longer need them.

Creating and deleting Review Types

1. With the *Critic's Corner Window* visible, tap on the menu silkscreen button. Select Manage Types from the Options menu.
2. The *Review Types Window* appears. To create a new Review Type, tap the Create button. The actions are the same as Example 2 previously presented in the *Creating a New Review* section. To delete a Review Type, select the Review Type you want to remove, and tap the Delete button. You can delete any Review Type listed, except "Other..."



Getting Help

To get help, tap the Help command button on the *Critic's Corner Window*.

Miscellaneous

There is no limit to the number of Reviews you can enter into Critic's Corner is (the only limit is your device's memory). However, the number of Review Types you can define is limited to 200.